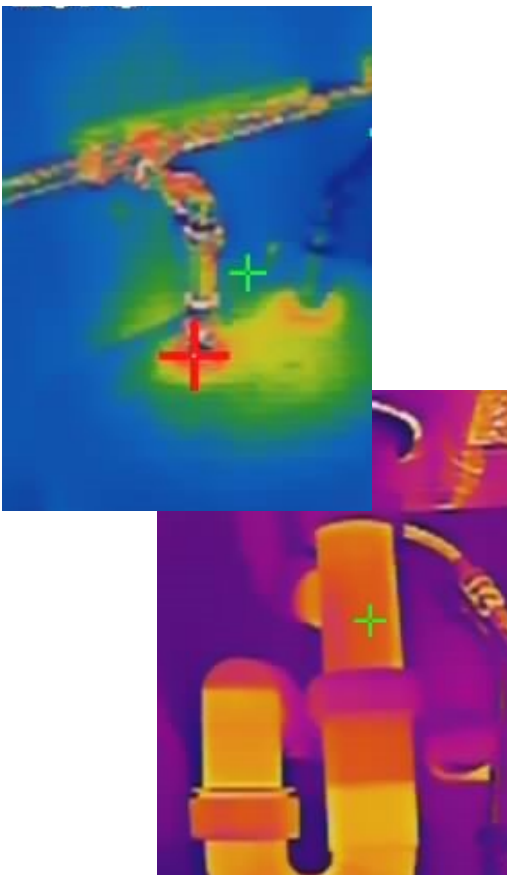




D160 Pro Entry Level IR Camera

The D160 Pro is SATIR Newest Entry level thermal camera. This model is based on the D160-F that was a camera that became popular during the beginning of the Covid-19 Pandemic. End-Users liked the easy to use interface and lightweight, one-handed operation. Following on from this feedback we developed an industrial model to meet growing demands for a user friendly entry level thermal camera that can be used in surveys for facilities management companies, used by maintenance engineers and tradespeople such as plumbers and electricians. The D160-Pro has a 160x120 IR detector with a temperature measurement range of $-20^{\circ}\text{C} \sim +550^{\circ}\text{C}$. It has a long battery life of up to 8 hours which means it can be used for all-day surveying.



Key Features

- 160x120 IR Detector
- Easy to use
- Thermal Mode Only
- Long Battery Life
- Straightforward operation from the box

D160 Pro Specifications

Thermal Camera	
Detector Type	UFPA
Detector Resolution	160x120
Pixel Size	17µm
FOV/Min. Focus Distance	50°x38.3°/15cm
Spatial Resolution	5.4mrad
Thermal Sensitivity (N.E.T.D)	50mK@25°C,F#=1.0)
Spectral range	8~14µm
Focus Length	3.1mm
Focus Type	Fixed
Measurement	
Temperature Range	-20°C ~ + 550°C
Accuracy	±2°C or ± 2% of readings
Tools	Centre Spot, auto hot/cold
Colour Palette	White hot, Black hot, Iron red, rainbow
Correction	Emissivity/Distance
Image Presentation	
Image Mode	IR Only
LCD Display	2.4" (320x240)
Frame Rate	25Hz
File Format (Thermal)	JPEG
Image Storage	8GB Micro SD Card, up to 128GB Optional
Power	
Power Interface	Micro USB Direct Charge
Battery Type	Rechargeable Li-ion Battery
Working Voltage	DC 5V
Battery Life	8 Hours
Environment	
Encapsulation	IP54
Humidity	10% to 95%, non-condensing
Operating Temperature	-10°C~+50°C
Storage Temperature	-40°C~+70°C
Shock	25G
Vibration	2G
Physical Characteristics	
Weight	350g including battery
Dimensions	96x78x59mm
Tripod Mount	1/4" _20
Additional Features	
Laser Pointer	Yes